



9 Albert Embankment, London
SE1

GARTONJONES.COM



9 Albert Embankment, London , SE1

£690 Per Week

A spectacular River Thames facing 1 bedroom apartment of approx. 835 sq. ft / 77.59 sq. m available to rent in 9 Albert Embankment, a popular riverside development on the banks of the River Thames positioned between Vauxhall & Lambeth Bridges. This fantastic apartment has been redesigned by the Landlord, being converted from a 2-bedroom apartment into a very generously sized 1 bedroom apartment with 2 bathrooms (1 en-suite) and further benefits from a large open plan reception room with fully integrated modern kitchen, floor to ceiling windows with access to a large private balcony enjoying lovely views of the river towards the Houses of Parliament and beyond. The flat has underfloor heating in all rooms, there is a 24-hour concierge and a well-stocked on-site convenience store. Located close to Lambeth Bridge you'll be within walking distance to the Houses of Parliament and London's trendy South Bank. Transport links are excellent with a frequent bus service on the doorstep and the rail/tube links of both Vauxhall and Waterloo within easy reach.

Please note furniture may differ to that shown in the current photos.

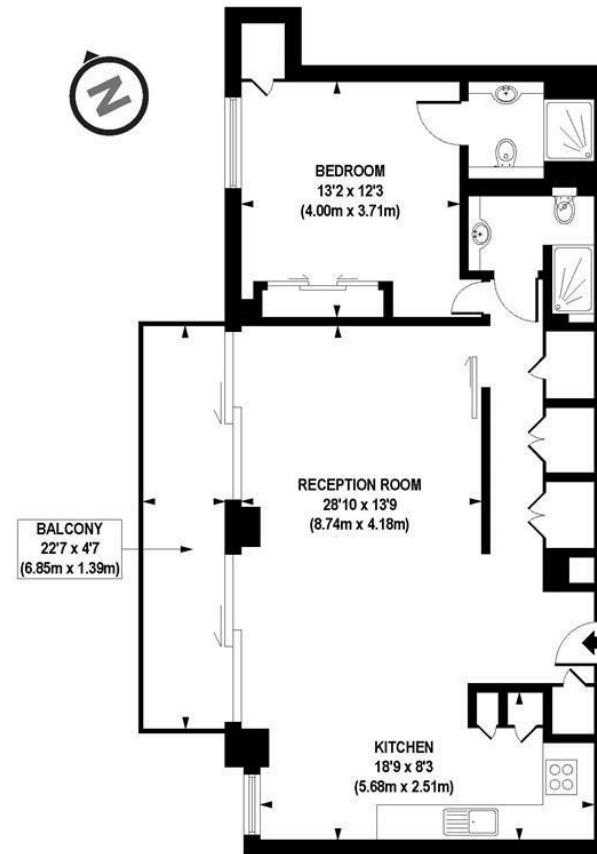
- 1 Bedroom
- 835 sq. ft / 77.59 sq. m
- Stunning Direct River Views
- Open Plan Reception
- Modern Integrated Kitchen
- 2 Bathrooms (1 En-Suite)
- Balcony
- Fantastic Storage
- 24 Hour Concierge
- 0.5 Miles to Vauxhall Station

GARTON JONES.COM

9 Albert
Embankment
London
SE1 7SP

Lettings:
+44 (0) 20 7735 1888
nineelms@gartonjones.com
www.gartonjones.com





APPROX. GROSS INTERNAL FLOOR AREA 835 sq. ft / 77.59 sq. m

Floorplan is for illustrative purposes only and is not to scale.
Every attempt has been made to ensure the accuracy of the floorplan shown, however all measurements, fixtures, fittings and data shown are an approximate interpretation for illustrative purposes only.
Liability for errors, omissions or mis-statement through negligence or otherwise is hereby excluded.

CP CREATIVE
PROPERTY MARKETING

